



Uganda Annual Report 2024-2025



Empowering Communities,
Transforming Lives:
A Year of Scaling Impact and
Deepening Transformation

Table of Contents

- 1.0 About Ripple Effect Uganda
- 1.1 Letter from the Board Chairperson and Country Director
- 1.2 Key Achievements per Focus Area
- 1.3 Our Partners
- 2.0 Success per Project Implemented
- 3.0 Key Lessons
- 4.0 Transformational Stories
- 5.0 Financials and Fund Management



Learn more, grow more, sell more

List of Acronyms

AMS	Agriculture and Market Support
MAAIF	Ministry of Agriculture, Animal Husbandry and Fisheries
HDDS	Household Dietary Diversity Score
LWWL	Living with Wildlife
MCCs	Milk Collection Centres
SILCs	Savings and Internal Lending Communities
UWA	Uganda Wildlife Authority
YIDaMS	Youth Inclusive Dairy Market Systems Project

Vision

A confident, thriving and sustainable rural Uganda.

Mission

To inspire and equip Ugandan communities to transform lives and protect the planet.

Core values

Integrity

Acting with honesty, fairness and honour in all that we do, treating all people with equal respect.

Accountability

Valuing the support and resources given to us, acting responsibly to ensure we use these with care and consideration.

Compassion

Believing that every person deserves a life worth living, we are driven by empathy, humanity, and justice towards people and planet.

About Ripple Effect uganda

Ripple Effect Uganda founded in 1988, is a Ugandan registered development Non-Government Organization (NGO) under the NGO Statute, 1989. Ripple Effect is governed by a Board of 9 Directors. It is split into three committees: Finances, Resources & Organizational Committee, Audit and Risk Committee and the Programme, and Resource Mobilization Committee. Since then, it has helped transform the lives of over one million people with its programme of support for rural smallholder farmers by applying innovative ways through farming systems, enterprise development and gender and social inclusion.

Partnering with smallholder farming families for 3-5 years, our staff have over 30 years' expertise of achieving sustainable change in some of the poorest and marginalised communities, through training in sustainable agriculture, enterprise development and gender and social inclusion. Our projects empower families with the confidence, skills and self-belief to become food and income secure, building thriving farming enterprises and developing self-reliance. Since our founding farmers sent cows to Uganda in 1988 to alleviate hunger.

At Ripple Effect, we bring over three decades of expertise in partnering with smallholder farming families to create lasting transformation in some of the poorest and most marginalized communities. Through practical training in sustainable agriculture, enterprise development, and gender and social inclusion, our projects enable families to gain confidence, build skills, and strengthen self-belief, unlocking pathways to food security, thriving farming enterprises, and true self-reliance. Our story began in 1988 when farmers sent cows to Uganda to alleviate hunger, a commitment that continues to ripple through every initiative we champion today.

Message from the Chairperson of the Board of Directors

unlocking Potential, Sustaining Impact



Mr. Geoffrey T. Kihuguru
Chairperson - Board of Directors,
Ripple Effect Uganda.

As Chairperson of the Board of Directors, it is both a privilege and a responsibility to reflect on a year marked by resilience, innovation, and transformative progress.

The 2024–2025 reporting period has reaffirmed Ripple Effect Uganda’s strategic clarity, operational excellence, and unwavering commitment to empowering communities.

In a context where one in five Ugandans lives in poverty, four in ten young people remain unemployed, and two in five households have endured climate-related shocks, Ripple Effect has not merely responded, it has led.

Our ten-year strategy, aligned with Uganda’s Vision 2040 and the National Development Plan IV, is designed to unlock the potential of 1.2 million vulnerable individuals through inclusive, climate-resilient, and market-oriented solutions.

This year alone, we reached **727,846** people (509,492 female, 218,354 male), catalyzed **UGX 5.3 billion** in milk sales, and supported **21,423** youth-led enterprises. These figures represent more than outputs; they are lives transformed, voices empowered, and futures secured.

Our strategic pillars; nutrition security, financial inclusion, climate adaptation, social inclusion, and policy influence are not standalone efforts. They are interwoven threads in a tapestry of sustainable development. We have witnessed women rise as leaders in agribusiness, youth become innovators in enterprise, and refugees transition from dependency to dignity.

As a Board, we remain steadfast in our governance role ensuring that Ripple Effect Uganda remains agile, accountable, and future-focused. We are scaling proven models, deepening partnerships, and investing in systems that guarantee sustainability beyond project lifecycles.

Looking ahead, our ambition is clear: to institutionalise innovation, localise impact, and mobilise resources that match the scale of our vision. We will continue to champion inclusive development, amplify community agency, and influence policy to ensure that no one is left behind.

To our partners, staff, and the communities we serve; thank you for your trust, collaboration, and belief in the ripple effect of change. Together, we are not only addressing today’s challenges; we are shaping a confident, thriving, and sustainable rural Uganda.

Message from the Country Director

Driving Systems Change, Empowering Local Leadership

The 2024–2025 reporting year has been a defining chapter in Ripple Effect Uganda’s journey towards building a confident, thriving, and sustainable rural Uganda.

As we reflect on our progress, we do so with a deep sense of purpose and a renewed commitment to systems change that is locally led, inclusive, and resilient.

Our strategy is not about short-term interventions, it is about transforming the structures that perpetuate poverty, exclusion, and vulnerability.

This year, we have made significant strides in embedding our three thematic pillars; sustainable agriculture, enterprise development, and gender and social inclusion into the very fabric of the communities we serve.

We have seen the power of community-led innovation. From youth-led dairy enterprises generating millions in revenue, to women-led savings groups driving financial inclusion, our participants are not just beneficiaries, they are co-creators of change. We are formalising enterprises, strengthening cooperatives, and building market systems that are inclusive and future ready.

In the face of climate volatility, our commitment to climate-smart agriculture and ecological restoration has never been more urgent. We are equipping households with the tools to adapt, diversify, and thrive ensuring that resilience is not a concept, but a lived reality.

Our work is also about shifting mindsets. Through gender-transformative approaches and inclusive training, we are challenging norms, fostering shared decision-making, and creating space for women, youth, refugees, and persons with disabilities to lead.

As we look ahead, we are scaling what works and investing in what matters, local systems, strategic partnerships, and adaptive learning. We are deepening our collaboration with government, the private sector, and civil society to ensure that our impact is not only measurable but sustainable.

To our dedicated staff, partners, and the communities we serve, thank you for your trust, resilience, and shared vision. Together, we are not just responding to Uganda’s development challenges. We are reimagining what is possible.



Mrs. Pamela Ebanyat
Country Director, Ripple Effect Uganda.





Stewards of Vision and Impact

The Board of Directors



MR. GEOFFREY T. KIHUGURU
CHAIRPERSON



MR. PAUL STUART
MEMBER/CEO



JIM DRANI DRILEBA
VICE CHAIRPERSON



MR. EVANS NAKHOKHO
MEMBER



MS. CHRISTINE ALUPO
MEMBER



DANIEL MUTUMBA
MEMBER



MS. HELLEN MACHIKA
MEMBER



MR. JOSEPH KAGGWA
MEMBER



MARGARET AZUBA
SEMWANGA
MEMBER



MRS. PAMELA EBANYAT
COUNTRY DIRECTOR
EX OFFICIO



Stewards of Vision and Impact

Senior Management



Country Director
Mrs. Pamela Ebanyat



Mr. Patrick Muwanguzi
Senior Finance and
Administration Officer,



Ms. Roselyn Akiiki
Programme & Partnership support
Manager



Mr. Alex Bagora
Programme Funding Manager



Mr. Jaber Nangoye
Monitoring and Evaluation
Manager

Project Coordinators



Abraham Obwakori Project
Manager Agriculture
Market Support



Joyce Lambuli
Project Coord
SAPLING



Gerald Asimwe Project
Coord Isingiro Soybean
Value Chain Project



Patrick Egessa Project
Manager - YIDaMS

Our Approach: Strategic Pathways to Inclusive and Sustainable Impact

Ripple Effect Uganda's impact is delivered through three distinct, yet complementary thematic approaches, each designed to address systemic barriers to rural transformation. These approaches serve as strategic enablers that underpin the broader vision of a confident, thriving, and sustainable rural Uganda.

Sustainable Agriculture Strategic Focus: Building ecological resilience and food sovereignty. This approach encompasses:

- **Sustainable Organic Agriculture (SOA):** Promoting agroecological practices that restore soil health, enhance biodiversity, and increase productivity.
- **Improved Animal Management (IAM):** Integrating livestock systems to improve nutrition, income, and climate resilience.

Sustainable Agriculture is the cornerstone of Ripple Effect's ecological and food systems transformation. It is not merely a delivery mechanism but a strategic pillar that responds to Uganda's agricultural productivity challenges and climate crisis.

Enterprise Development Strategic Focus: Unlocking economic potential and financial inclusion.

This approach includes:

- On-farm and off-farm enterprise incubation.
- Value addition and market systems development.
- Financial literacy and formalization of youth- and women-led businesses.

Enterprise Development is Ripple Effect's pathway to economic empowerment. It addresses Uganda's subsistence economy and youth unemployment by enabling households to transition into vibrant local economies

Gender and Social Inclusion

Strategic Focus: Advancing equity, voice, and agency.

This approach is both a standalone thematic area and a cross-cutting commitment. It employs:

- ♦ Transformative Household Methodology (THM)
- ♦ Gender Action Learning Systems (GALS)
- ♦ Disability inclusion frameworks

Gender and Social Inclusion is Ripple Effect's social transformation engine. It ensures that all interventions are inclusive, equitable, and responsive to the needs of marginalized groups, including women, youth, refugees, and persons with disabilities.

Strategic objectives and progress

Ripple Effect Uganda's strategic objectives are impact-driven commitments that guide the Ripple Effect's long-term transformation agenda, they represent desired outcomes for Uganda's rural communities by 2030.

Objective 1: Food and Nutrition Security

Strategic Goal: Ensure that 75% of households have access to sufficient, safe, and nutritious food.

Progress Snapshot (2024–2025):

- 62% of households consumed ≥ 6 food groups/day.
- 46% met the overall food security indicator (61% progress toward target).

Objective 2: Financial Security and Economic Empowerment

Strategic Goal: Ensure that 70% of households are financially secure and earn above the poverty line.

Progress Snapshot (2024–2025):

- 44% of households earned above \$1.90/day.
- 91% saved \geq \$0.50/day (63% progress toward income security target).

Objective 3: Climate Adaptation and Ecosystem Restoration

Strategic Goal: Ensure that 78% of households adapt effectively to climate change and restore ecosystems.

Progress Snapshot (2024–2025):

- 23% adopted climate adaptation practices.
- 34% adopted climate-smart crop practices (29% progress toward target).

Objective 4: Inclusion, Voice, and Agency

Strategic Goal: Ensure that 78% of households report increased inclusion, voice, and agency for marginalized groups.

Progress Snapshot (2024–2025):

- 65% of households reported increased inclusion and voice.
- 49% of women reported decision-making power (83% progress toward inclusion target).

Objective 5: Influence and Strategic Partnerships

Strategic Goal: Strengthen Ripple Effect's role as a catalyst for change through partnerships and influence.

Progress Snapshot (2024–2025):

- Strategic partnerships with UNBS, DIT, SACCOs, and government programs.
- 994 Savings and Internal Lending Communities groups mobilized UGX 4.45 billion in savings.

Our year in Numbers

This year Ripple Effect uganda reached

727,846

Households supported

99,713

Reach by gender

Male 218,354

Female 509,492



1.2 Key Achievements

In alignment with **Uganda's Vision 2040** and the **National Development Plan IV**, Ripple Effect Uganda has continued to deliver **transformative impact** across its three thematic areas; **Sustainable Agriculture, Enterprise Development, and Gender and Social Inclusion**. Ripple Effect interventions are strategically designed to address systemic challenges such as youth unemployment, low agricultural productivity, gender inequality, and financial exclusion, which remain critical barriers to inclusive rural development.

By reaching over **727,846** people individuals and empowering a significant proportion of targeted communities, Ripple Effect has not only improved livelihoods but also strengthened local systems, catalysed innovation, and fostered resilience. Our work has contributed meaningfully to national goals on food security, employment creation, climate adaptation, and social equity.

The following pages present a breakdown of our achievements across key thematic areas, showcasing how our integrated, community-led approach is delivering measurable and lasting change.



Sabiti, a youth participant utilising the Chopper provided by YIDaMS to process silage

Nutrition & Food Security

Advancing Resilience Through Sustainable Agriculture

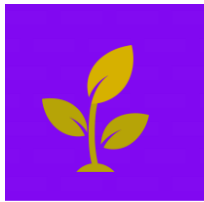
In pursuit of our strategic objective to ensure that **75% of households have access to sufficient, safe, and nutritious food**, Ripple Effect Uganda continues to implement **integrated, climate-smart agricultural interventions** that address both immediate nutritional needs and long-term food system resilience.

Ripple Effect approach to food security is rooted in sustainable organic agriculture (SOA) and improved animal management (IAM), with a deliberate focus on diversified farming systems, value addition, and nutrition-sensitive agriculture.

During the reporting period, Ripple Effect:

- **Promoted diversified production systems**, including vegetable cultivation and climate-resilient crops, to enhance household dietary diversity.
- **Trained youth and women in vegetable production and post-harvest handling**, equipping them with practical skills to reduce food loss and improve food quality.
- **Strengthened dairy value chains**, supporting the production of nutrient-rich products such as yoghurt and ghee, particularly through the Youth Inclusive Dairy Market Systems (YIDaMS) project.
- **Enhanced food safety and quality** by training farmers in post-harvest management techniques, including the use of hermetic storage technologies and protected harvesting methods.
- **Supported Micro and Small Enterprises (MSEs)** to acquire Quality Marks from the Uganda National Bureau of Standards (UNBS), enabling them to meet food safety standards and access formal markets.
- **Addressed micronutrient deficiencies** by promoting the cultivation of Orange-Fleshed Sweet Potatoes (OFSP) and encouraging dietary diversity at household level.

These interventions are not only contributing to zero hunger (SDG 2) but are also aligned with Uganda's Vision 2040 and the National Development Plan IV, which prioritise food and nutrition security as a cornerstone of socio-economic transformation.



3.8 m

Litres of milk produced by the Youth Inclusive Dairy Market Systems Project.



A participant poses with the yoghurt she manufactures and packages.

Sustainable Income

Advancing Economic Inclusion Through Enterprise Development



34,237
Youth Employed through the
YIDaMS Project

Aligned with the strategic objective of ensuring that **70% of households achieve financial security** with an average daily income above \$1.90, Ripple Effect Uganda strengthens rural livelihoods through a comprehensive enterprise development approach.

This approach is designed to transition households from subsistence to sustainable economic engagement by fostering entrepreneurship, financial inclusion, and market integration

Key interventions during the reporting period included:

- **Value Addition:** Support for the transformation of agricultural produce into higher-value products, such as fortified soybean flour, biscuits, yoghurt, ghee, and confectionery, enabled households to increase income while enhancing food security and nutrition.
- **Enterprise Diversification:** Promotion of both livestock-based enterprises (e.g., animal feed formulation, poultry) and off-farm ventures (e.g., soap making, horticulture) reduced household vulnerability to market and climate shocks by broadening income streams.
- **Entrepreneurship and Skilling:** Delivery of targeted training in business development, financial literacy, record-keeping, and market access equipped participants with the competencies required to establish and grow viable enterprises.
- **Financial Inclusion Mechanisms:** Expansion of Savings and Internal Lending Communities (SILCs) provided accessible credit and fostered a culture of saving. Additionally, community groups were linked to formal financial institutions and government programmes, including the Parish Development Model (PDM), to access loans, grants, and business development services.

These interventions directly contribute to Uganda's Vision 2040 and the National Development Plan IV, which prioritise inclusive economic growth, job creation, and private sector-led development



A participant poses in her shop alongside the products she makes and packages. Self employment is key for sustainable incomes.



Climate Change Mitigation

Building Ecological Resilience Through Sustainable Practices

In alignment with the strategic objective to ensure that **78% of households adapt effectively to climate change and restore ecosystems**, Ripple Effect Uganda integrates environmental sustainability into all programme interventions.

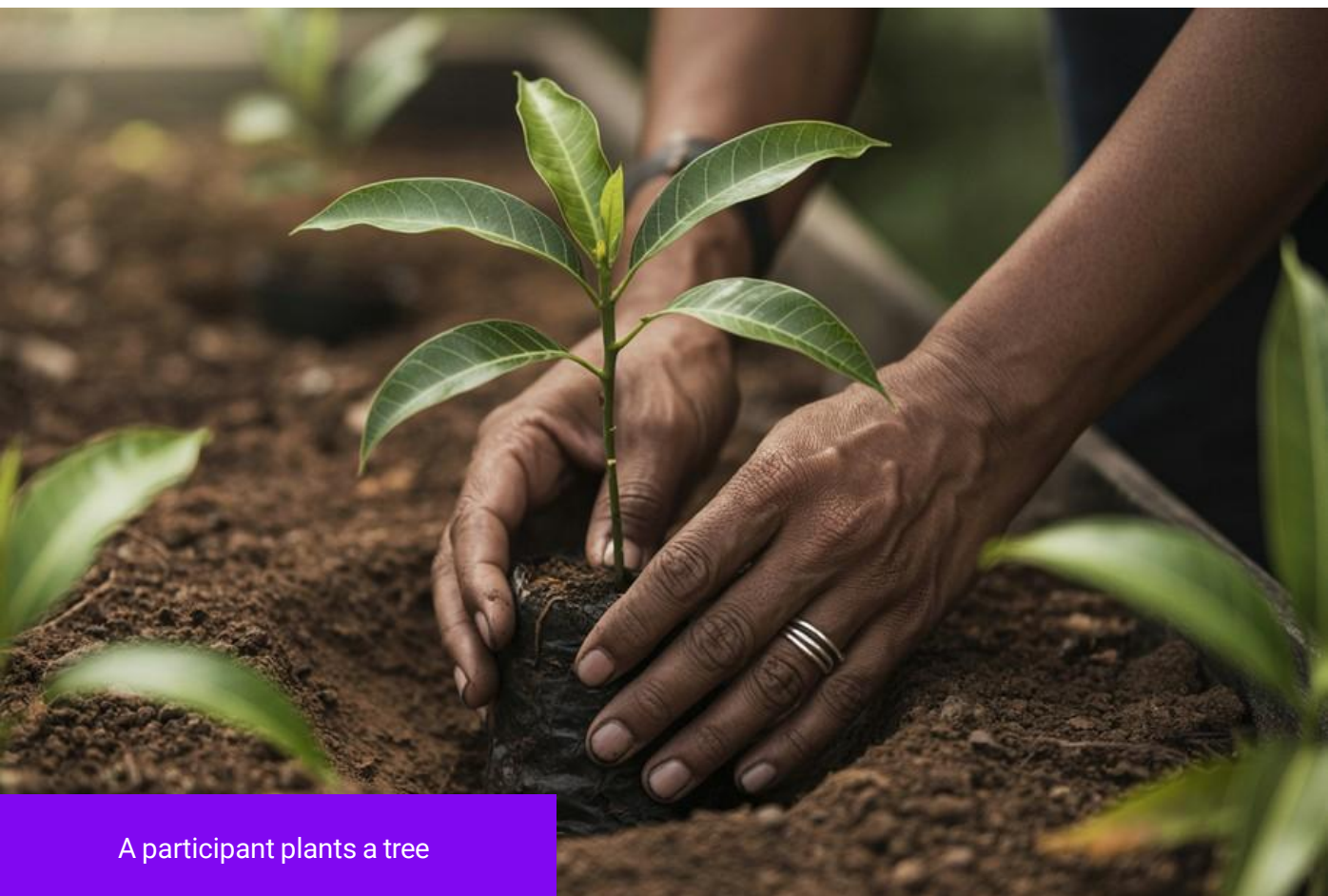


The organisation's approach to climate change mitigation is rooted in **climate-smart agriculture, renewable energy adoption, and ecosystem restoration**, with a strong emphasis on community-led solutions.

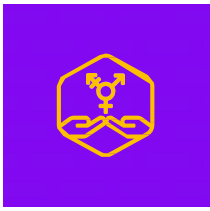
During the reporting period, key interventions included:

- **Alternative Energy Solutions:** Youth were trained to produce charcoal briquettes from agricultural biomass, providing a cleaner, cost-effective alternative to traditional fuels while reducing deforestation and carbon emissions.
- **Climate-Smart Agricultural Practices:** Households adopted techniques such as mulching, rotational cropping, soil earthing, and water conservation, which enhance soil health, reduce erosion, and improve productivity under changing climatic conditions.
- **Agroforestry and Reforestation:** Communities were supported to implement tree planting and agroforestry initiatives, contributing to carbon sequestration, biodiversity conservation, and improved microclimates.
- **Promotion of Organic Inputs:** The use of organic fertilisers and biopesticides, including those derived from rabbit urine, was encouraged to reduce reliance on synthetic chemicals and promote soil regeneration.
- **Renewable Energy Technologies:** The adoption of solar-powered irrigation systems was promoted to reduce dependence on fossil fuels and lower production costs, particularly in drought-prone areas.

These interventions are directly aligned with Uganda's Vision 2040 and the National Development Plan IV, which prioritise climate change adaptation and natural resource management as critical pillars for sustainable development.



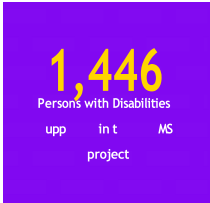
A participant plants a tree



Gender and Social Inclusion

Advancing Equity, Voice, and Agency

Ripple Effect Uganda places **gender equality and social inclusion** at the core of its programming, recognising that sustainable development cannot be achieved without addressing the structural barriers that marginalise **women, youth, refugees, and persons with disabilities** (PWDs).



In line with the strategic objective to ensure that 78% of households report increased inclusion, voice, and agency, the organisation applies both Gender Transformative and Gender Accommodative Approaches to foster inclusive participation and equitable outcomes.

Key interventions during the reporting period included:

- **Challenging Restrictive Norms:** Community-based methodologies such as the Transformative Household Methodology (THM) and Gender Action Learning System (GALS) were used in over 12 documented sessions to promote joint household planning, shared decision-making, and confidence-building among women and men.
- **Male Engagement:** Targeted dialogues and sensitisation sessions were conducted with men to foster supportive environments for women's economic participation and reduce gender-based violence (GBV) and spousal opposition. A total of 35 male engagement groups were formed (11 under the SAPLING project and 24 under the YIDaMS project) across multiple districts. These groups played a critical role in promoting joint household planning, enhancing spousal consent, and increasing women's participation in leadership and enterprise development.
- **Financial Empowerment:** Women's access to financial services was enhanced through active participation in 994 Savings and Internal Lending Communities (SILCs), enabling them to save, access credit, and invest in income-generating activities despite systemic financial barriers.
- **Disability Inclusion:** In partnership with organisations such as Light for the World (LFTW), staff were trained in disability inclusion, and physical infrastructure such as accessible farm schools with ramps was adapted to ensure participation of 1,446 persons with disabilities (PWDs). Tailored roles in value addition activities were also created to accommodate diverse abilities.
- **Confidence Building for Women:** A total of 215 structured sessions using storytelling, goal setting, peer mentoring, and role modelling empowered women to become assertive, plan jointly with spouses, and prioritize investment in pig farming and other enterprises.
- **Validation of Gendered Constraints:** 2 major participatory focus group events were conducted to identify and validate community-specific gender constraints, such as myths around menstruation, AI services, and leadership roles.
- **Community Action Planning for Gender Equity:** Communities developed 2 district-level action plans to address gendered constraints, including promoting joint budgeting, shared family labor, and equitable access to productive resources.
- **Support for Women Artificial Insemination (AI) Service Providers:** Women were trained in AI service delivery, provided with equipment such as scanners and pregnancy test kits, and supported through community sensitisation to improve acceptance and visibility in the pig value chain. At least 2 women AI providers were documented as role models.
- **Gender-Sensitive Infrastructure Improvements:** Construction and upgrading of 3 types of facilities (butcheries, kitchens, and shelters) were promoted to support women's participation in pork trade and value addition, ensuring safer and more dignified working environments.

Strategic Partnerships

Leveraging Collaboration for Scalable and Sustainable Impact



Strategic partnerships remain a cornerstone of Ripple Effect Uganda's approach to delivering inclusive, systems-level change.

In line with the organisation's strategic objective to maximise impact through **collaboration and influence**, partnerships are cultivated across sectors to enhance technical capacity, expand reach, and ensure sustainability.

During the reporting period, the organization deepened and diversified its multi-sectoral collaborations, enabling **transformative outcomes in skilling, enterprise development, financial inclusion, market access, and social equity**.

Ripple Effect Uganda's work was made possible through generous support and collaboration with several development and funding partners. The **Mastercard Foundation** funded the Youth Inclusive Dairy Market Systems (YIDaMS) project, while the **International Labour Organization (ILO)** supported the Soybean Value Chain Project under the PROSPECTS programme. The **World Food Programme (WFP)** contributed to Agricultural Market Systems (AMS) in Isingiro, Kikuube, and Kyegegwa. The **International Livestock Research Institute (ILRI)** co-implemented the SAPLING project, which focused on gender-transformative approaches in piggery. Additional contributions came from the **United States Agency for International Development (USAID)**, the **Food and Agriculture Organization (FAO)**, and the **United Nations Children's Fund (UNICEF)**, who supported food systems dialogues, nutrition initiatives, and refugee programming.

To strengthen skilling and training, Ripple Effect Uganda collaborated with **Kagira Farm School, Rwenjeru Farm School, St Benedict's Technical Institute – Kakindo, CIELO ECOFARM, Kagiira Skills Development Center, AGDI Dairy Farm, AWA Foods, St Mary's Girls Vocational Institute, IBO Mixed Farm, St Bruno Vocational School, Rwenjeru Agro-Tourism Demonstration and Training Farm, Highmark Dairy Farm and Agri-business Skilling Centre, and Ibanda Farm Institute**. These institutions delivered structured apprenticeship training, complemented by over **240 local artisans** who facilitated cottage-based skilling.

The **Directorate of Industrial Training (DIT)** and the **Uganda Business and Technical Examinations Board (UBTEB)** certified youth with nationally recognized qualifications. **Makerere University** and the **Uganda Industrial Research Institute (UIRI)** contributed to strengthening curriculum relevance and incubation models. **Biyinzika Poultry International** provided poultry management and vaccination training, while the **Institute for Social Transformation** facilitated Gender Action Learning System (GALS) training.

Further support came from the **Bulindi Zonal Agricultural Research and Development Institute**, which supplied foundation seeds for Local Seed Businesses (LSBs); **Enabel** (Belgian Development Agency), which trained youth in fruit tree nursery establishment; and the **International Potato Center (CIP)**, which supported Orange-Fleshed Sweet Potato (OFSP) multiplication for nutrition and income generation.

Ripple Effect Uganda enhanced **financial inclusion** by linking youth and groups to financial institutions including **Equity Bank Uganda Limited, Centenary Bank Uganda Limited, Opportunity Bank Uganda Limited, Vision Fund Uganda, UGAFOD Microfinance, PostBank Uganda, Mystery Gorilla, and the Department of Possibilities**. The organization also worked with **Savings and Credit Cooperative Organizations (SACCOs)** such as **EBO, Mushanga, KYAPS, Kyamuhunga People's SACCO, and Mutara SACCO**. **Financial Sector Deepening Uganda (FSDU)** played a key role in enhancing financial inclusion strategies. These institutions provided loans, opened accounts, and supported youth-led businesses with tailored financial products.

To ensure **quality assurance and regulatory compliance**, Ripple Effect Uganda partnered with the **Uganda National Bureau of Standards (UNBS)** to support **Micro and Small Enterprises (MSEs)** in acquiring Quality Marks, the **Uganda Registration Services Bureau (URSB)** to facilitate formal business registration, the **National Drug Authority (NDA)** to license agro-vet dealers, and the **Uganda Veterinary Board (UVB)** to oversee para-veterinary professionals.

Market linkages and access to agricultural inputs were facilitated through partnerships with **AgriNet Uganda Limited**, which served as a soybean off-taker and capital provider to village agents, as well as **GrainPulse Uganda Limited, Yield Harvest Uganda, ASIGMA Advisory Limited, Community Volunteer Initiative for Development (COVOID), Nyati Agro Input Dealers, Hamidu Balobi & Sons Agro-Input, Priscila Agro Input, Bukoola Agrochemicals, SAM Suppliers, Benjamin AgroInput, Kaberebere United Farmers' Agro-Input Shop, Equator Seeds, Okeba Seeds Limited, Abiyoffe AgroInputs, TipTop Baking Company, Malemo Food Company Limited, and YM Foundation Maize Millers**. These actors provided essential inputs, market access, and value addition services to youth-led enterprises.

In **business development and incubation**, Ripple Effect Uganda collaborated with **ADROIT, APROCEL, and AgriNet** to support enterprise incubation and value chain development. **Yoba for Life** enhanced dairy quality training and probiotic yoghurt production, while **SEE Change**, affiliated with **Johns Hopkins University**, advanced gender-transformative programming. The **Business Development Service Provider Network (BDSPN)** conducted cooperative assessments and capacity strengthening, and Village Agents played a critical role in aggregating produce and facilitating market access.

Ripple Effect Uganda also worked closely with **district local governments** across **Mbarara, Ibanda, Kamwenge, Isingiro, Ntungamo, Bushenyi, Sheema, Rubirizi, Mitooma, Kikuube, Kyegegwa, Mukono, and Masaka**. These collaborations supported group registration, financial literacy, and access to government programs such as the **Parish Development Model (PDM), Uganda Women Entrepreneurship Programme (UWEP), the GROW Project, and the Development Response to Displacement Impacts Project (DRDIP)**. The **Office of the Prime Minister (OPM)** coordinated refugee response and partner alignment.

Social inclusion and disability programming were advanced through partnerships with **Light for the World (LFTW), district disability unions, community gender focal persons, and Disability Inclusion Facilitators (DIFs)**. These actors promoted the participation of persons with disabilities, supported inclusive skilling and enterprise development, and ensured safeguarding and feedback mechanisms. Community mobilization was driven by **Community Facilitators (CFs), Village Agents, Youth Village Champion Leaders, Community Resource Persons (CRPs), and Male Engagement Groups**. Their involvement was vital in training delivery, safeguarding, and feedback collection, fostering inclusive participation and promoting women's economic empowerment.

Finally, Ripple Effect Uganda strengthened **environmental and climate resilience** through collaborations with **NSAMIZI Training Institute of Social Development**, which supported agroforestry and tree planting initiatives, and the **Development Response to Displacement Impact Project in Uganda (DRDIP)**, which promoted climate-smart agriculture and environmental protection.

Through these strategic partnerships, Ripple Effect Uganda continues to catalyse inclusive development, empower youth, and build resilient communities across Uganda.



1.3 Partners

Government



Donors



Private Sector



Civil Society Organizations





2.1 Youth Inclusive Dairy Market Systems (YIDaMS) Project

Background to the project

In partnership with the Mastercard Foundation, Ripple Effect Uganda together with AgriNet, APROCEL and ADROIT implementing the Youth Inclusive Dairy Market Systems Project (YIDaMS) for five years (2022-2027) across nine districts i.e. Mbarara, Ibanda, Kamwenge, Rubirizi, Mitooma, Bushenyi, Sheema, Ntungamo and Isingiro Districts in southwestern Uganda.

The Project goal is to enhance the socio-economic welfare of 50,000 young individuals by facilitating their access to employment opportunities within the dairy industry in western Uganda.

The project has two Key outcomes:

- Increased access to quality skilling and skills utilization in the dairy value chain by young people.
- Increased growth of business enterprises for the young people in the dairy value chain.

The project goal is to enhance the dairy value chain and support sustainable livelihoods for young people



Participants pause for a group photo after commissioning of their MCC



YIDaMS Project Key Achievements and Impact

34,237

Youth transitioned into employment

93%

Of these youth report it as primary source of income

UGX 5.3 b

Earned cumulatively by youth through dairy-related enterprises

Enterprise Development

875

Youth-led enterprises supported

496

Mini-incubation hubs

49

Milk aggregation centers

3.8 m

Liters of milk sold

Skills Development & Certification

36,137

Youth trained in vocational skills

5,808

Trained youth certified by DIT

Inclusion & Safeguarding

81%

Female Participants

2,352

Refugee Participants

1,446

Persons with Disabilities





Key Insights

Financial Inclusion

uGX **4.45 b**
M ed ng

uGX **1.2 b**
Disbursed in Loans

9,938
Youth accessed financial services

994
SILC Groups

Self-Employment Dominance

Individuals in self-employment is significantly higher than that of those in wage employment. The informal cottage skilling model—where local artisans train youth at active business centers—has proven far more effective than formal apprenticeships in addition to farm schools. This success stems from the model's accessibility, real-world training environment, and immediate work exposure.

Financial Inclusion and Gender Empowerment

Village Savings and Internal Lending Communities mobilize substantial community capital. Women dominate participation of savings group membership and participation. These us loans for household needs and business investment. Young women primarily enter low-capital, high-demand enterprises like confectionery (mandazi, daddies) and dairy processing (yoghurt, ghee), demonstrating strong gender empowerment outcomes.

Rapid Infrastructure Scaling Drives Significant Revenue

Milk Collection Centers and Selling Points have expanded to collectively selling 3.8 million liters of milk and generating UGX 5.3 billion in cumulative revenue. Success is driven by cold chain systems and linkages to large off-takers. Additionally, 496 mini-incubation hubs generated UGX 1.53 billion in revenue.

Adaptive Implementation Addresses Persistent Barriers

Wage employment remains low due to limited formal opportunities. Business formalization faces obstacles including registration costs and lack of National Identification Numbers. The project adapts through partnerships with NIRA for mass enrollment, collaboration with SACCOs for tailored loans, and innovative market access strategies like school-based yoghurt feeding programs to promote UNBS certification and address market saturation.



2.2 Agriculture Market Support (AMS) Project

About the Project

AMS Background

AMS operates in Isingiro, Kyegegwa, and Kikuube districts to tackle youth unemployment, low incomes, and weak agricultural markets. It promotes youth-led agribusinesses through skilling, mentorship, and subsidized grants focusing on poultry, vegetables, mushrooms, and dairy. Agricultural Market Support(AMS) project strengthens public-private partnerships and market systems to improve productivity, post-harvest practices, and access to opportunities, with at least 75% of beneficiaries being young women.

Project Goal

Strengthened resilient livelihoods of 24,179 smallholder farmers especially women and youth in Kyegegwa, Isingiro and Kikuube by December 2025

Project Objectives

- 1.To Increase demand and supply of agricultural services among 24179 smallholders, MSEs and Aggregators in Isingiro, Kyegegwa and Kikuube districts by December 2025.
- 2.To increase pro-smallholder marketing among 24179 smallholders, especially youth and women in Isingiro, Kyegegwa and Kikuube districts by December 2025.
- 3.To improve quality of targeted crops, Post Harvest Management, and food safety among 24179 smallholders, MSEs and Aggregators in Isingiro, Kyegegwa and Kikuube districts by December 2025.
- 4.To strengthen national and sub-national institutions for pro-smallholder policies and programs.



AMS participants stall at the international day for cooperatives in Fort portal.



AMS Project Key Achievements and Impact

24,397

Youth Supported

875

Youth-led Entreprises

uGX 3.72 bn

Value of produce sold

Enterprise Development

uGX 4.45 bn

Amount in cumulative savings and loans

8,051

Number of youth trained in business planning and governance

61

Saving Groups

105

VSLAs

Enterprise Development

20

Number of enterprises receiving branding, certification, or Q-mark

12

Number of cooperatives registered

Key Insights

Primary Production Dominance

Youth engagement is concentrated in traditional farming, with crop production dominating followed by livestock rearing. Capacity assessments reveal strong interest in high-potential enterprises, youth want to start or upscale poultry, alongside confectionery and mushroom production. Gender patterns show higher female participation among refugees, indicating need for diversified opportunities, especially for refugee males.

Value Addition and CBT Linkages Drive Market Success

While bulk staple marketing achieved significant sales, value-added enterprises generated stronger returns: animal feed formulators and hive product dealers made more sales. Strategic use of Cash Based Transfer market days in refugee settlements proved highly effective, demonstrating that institutional markets and value addition outperform bulk commodity sale

Partnerships Enable Effective Formalization and Capacity Building

AMS successfully facilitates group formalization and quality enhancement through strategic partnerships. Multiple groups registered as Community-Based Organizations, while a few became fully registered cooperatives. Partnership with Uganda National Bureau of Standards enabled Micro and Small Enterprises assessments for Quality Mark acquisition, receiving subsidy support for Uganda National Bureau of Standards compliance upgrades. Financial partnerships delivered results: youth farmers accessed PDM loans, while farmers purchased agro-inputs and post-harvest materials through networked suppliers.





2.3 Soybean Value Chain Project

About the Project

With funding from **International Labor Organisation** (ILO) under the ILO-PROSPECTS programme, Ripple Effect implemented the soybean value chain project in 3 Sub-Counties of Ngarama, Rugaaga, Rushasha and 2 zones of Rubondo and Juru in Nakivale Settlement for the year (2023-2024) in Southwestern Uganda.

The project goal was to increase household incomes of refugees and host communities, especially among women and youth in Isingiro District through inclusive soybean market systems development.

The Project had two key outcomes.

1. Enhanced capacity among refugees and host communities to increase production and productivity of soybean.
2. Improved market access and linkages among refugees and host community soybean value chain actors

Increasing household incomes for refugees and host communities, especially women and youth



Aidah, a participant cleaning her grain before storing in her store



Soybean Value Chain Project

Key Achievements and Impact

500

Farmers reached

355

Farmers adopted smart practices

500

Farmers accessed extension services

Project Indicators

23

Women led enterprises

101

Refugees engaged

75

Farmers trained in Agroforestry

172

Households implementing Post Harvest Management

23

Groups formally registered

3

MSMEs certified by UNBS

Key Insights

Value Addition and Diversification Drive High Income and Resilience

The project achieved exceptional returns by shifting from primary soybean production to value-added products. Soybean-based products (half cakes, soy-fortified flour, biscuits) generated cumulative double the sales in raw soybean earnings.

SILC and Targeted Linkages Foster Financial Inclusion for Women

The Savings and Internal Lending Communities(SILC) model effectively mobilized internal capital among vulnerable groups. Across 55 SILC groups, farmers saved and distributed a lot of money in member loans. Women comprised 67% of SILC members, accessing loans from banks and SACCOs, and 109 women obtaining money through government programs.

Climate Change and Structural Barriers Limit Primary Production

Prolonged dry spells severely reduced soybean yields, with Local Seed Business(LSB) gardens and often failing certification standards. Collective bulking underperformed due to side selling, amidst price fluctuations. While irrigation-supported block farms increased production, high fuel costs and security issues (dam liner vandalization) threaten sustainability of these high-input solutions.



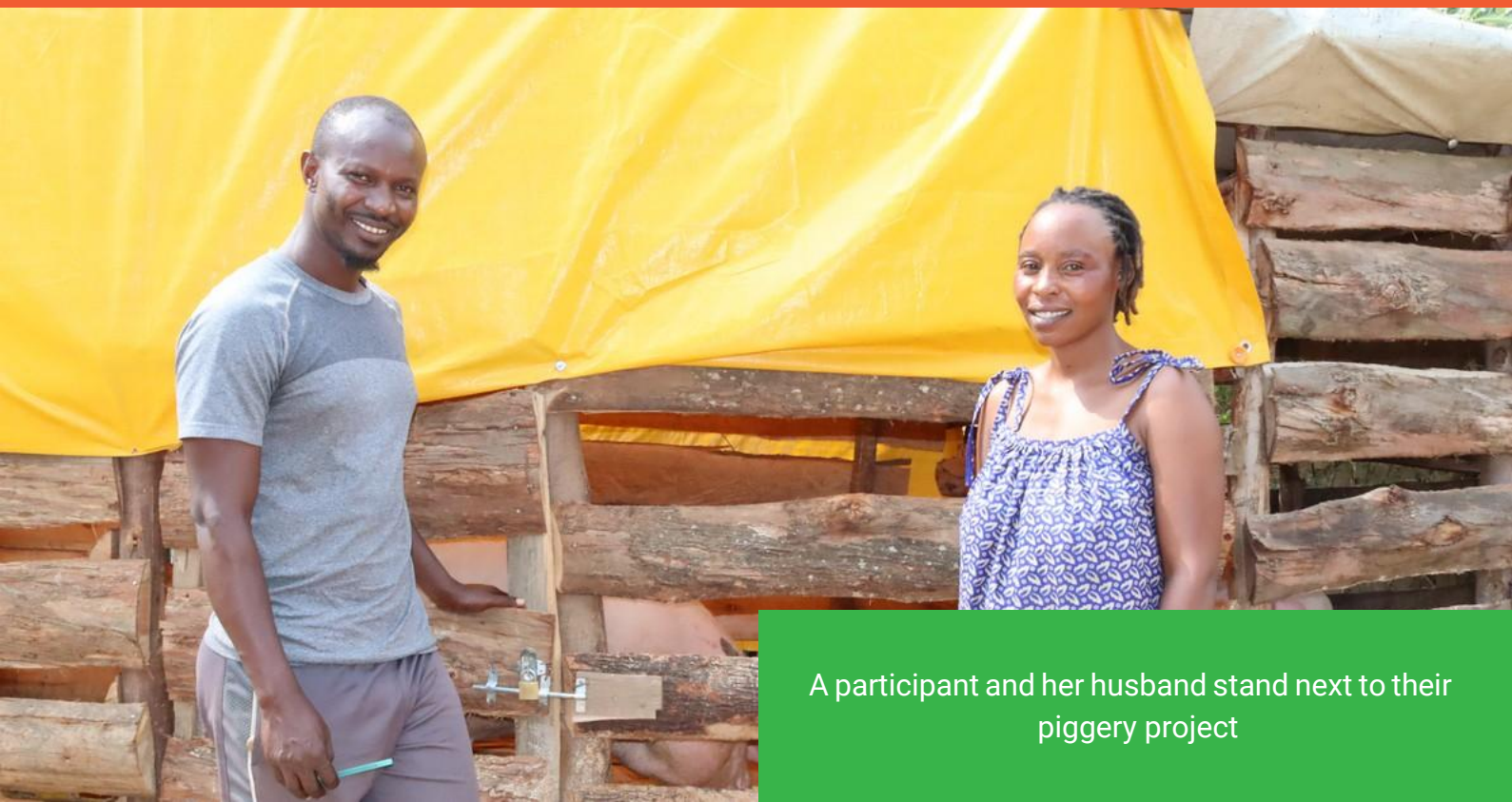
2.4 Sustainable Animal Productivity for Livelihoods, Nutrition and Gender Inclusion (SAPLING) Project

About the Project

The SAPLING Project, implemented by Ripple Effect Uganda in partnership with the International Livestock Research Institute (ILRI), seeks to promote inclusive pig farming as a pathway to improved household livelihoods, nutrition, and gender equity. The project targets restrictive gender norms and economic barriers that limit women's participation in pig-related enterprises across Mukono and Masaka districts.

During the reporting period, SAPLING applied a dual approach combining Gender Transformative Approaches (GTAs) and Gender Accommodative Approaches (GAAs). GTAs were delivered through radio talk shows, community dialogues, and stereotype ladder tools to challenge societal norms and elevate women's visibility in pig farming. GAAs focused on reducing gendered constraints through peer mentorship, goal setting, and male engagement.

Farmer profiling was conducted to inform targeted interventions, and local government officials were actively involved in mobilization and sensitization. Community reflection events ("Ekyoto") and panel discussions showcased success stories and promoted peer learning. The project also supported women to access government programs such as UWEP, PDM, and GROW.



A participant and her husband stand next to their piggery project



The SAPLING Project Key Achievements and Impact

434

Farmers reached

69%

Female Participation

14

GTA Sessions Conducted

Project Indicators

215

Confidence Building Sessions for Women conducted

104

Youth trained in bakery

100

Youth trained in poultry

246

Youth trained in Post Harvest Management

23

Groups formally registered

6

MSMEs certified by UNBS

Key Insights

Gender Transformation and Mindset Change

Gender Transformative Approaches (GTAs) and community sensitization successfully challenged restrictive gender norms surrounding women's participation which resulted in increased acceptance of women in the pig business and stronger support from men for their wives' enterprises, demonstrating effective social norm transformation.

Empowerment Through Confidence and Skills

Confidence-building sessions enhanced women's self-belief and empowered them to openly share socio-economic achievements. Women became more assertive, prioritized investments (land acquisition, house construction), and embraced pig farming as a pathway for household transformation, showing tangible behavioral change beyond technical training.

Partnerships and Community-Level Training

Strengthening local government collaboration proved critical for community mobilization, confidence-building, and enabling women's access to government economic empowerment programs. Group-level training sessions increased women's participation by accommodating the community's daily schedule ("Community clock"), demonstrating the importance of context-appropriate delivery methods.



3.0 Key Lessons

Tailored Skilling and Certification are Essential for Employability

Combining practical, accessible training with formal certification significantly boosts youth confidence and transition into work. The Artisan/Cottage model offers immediate exposure to real work settings and local accessibility, while the Apprenticeship model provides structured learning and leads to formal certification (like DIT), enhancing career prospects. Tailored enterprise-specific mentorship and business planning further unlock entrepreneurial capacity among youth groups

Financial Inclusion Requires Layered Support Systems

Relying solely on external funds is unsustainable; successful financial access is layered. Savings and Internal Lending Communities (SILC) proved highly effective for mobilizing collective savings and providing accessible loans, especially for women. This must be complemented by the Innovation Challenge Fund (ICF), which helps youth acquire essential productive assets (like equipment) for scaling their businesses

Targeted Gender and Social Inclusion Initiatives Drive Participation

Achieving equitable outcomes requires intentionally addressing restrictive social norms. Community dialogues and male engagement groups are crucial for sensitizing men and spouses on project objectives, reducing gender restrictive sanctions, and garnering supportive environments for women to participate in training and business. Additionally, equipping staff with disability inclusion awareness enables the proper identification, accommodation, and effective mobilization of youth with disabilities.

Enterprise Diversification and Value Addition Enhance Resilience

Focusing on diversified income streams protects beneficiaries against market fluctuations, climate shocks, and disease outbreaks. Promoting value addition (such as soy-based products, ghee, yogurt, and confectionary) significantly increases revenue and strengthens financial resilience. Key high-return, low-investment enterprises observed include pasture production, milk tea, milk vending, and confectionery.

Strengthening Collaboration with Local Authorities is Key for Sustainability and Formalization

Collaboration with local government authorities is essential for community mobilization, sensitization, and enhancing sustainability. Furthermore, groups benefit from support in formal registration (as Community-Based Organizations or Cooperatives) to acquire official recognition, enabling them to lobby, access government programs (like PDM or GROW), and secure business development services.



4.0 Transformational Stories

From Dependence to Determination: Mbabazi Trifine's Journey



Trifine and her husband feed chickens together, showing teamwork in their poultry farm

Name: Mbabazi Trifine

Location: Nkanja Subcounty, Kyegewa District

Group Affiliation: Kakoni B Bakyala Twetungure Group

Project Entry Point: Joined AMS in 2020 through field training officers

Background

Mbabazi Trifine, a resident of Kakoni B Village in Kyegewa District, was once a housewife with limited economic engagement. Her life began to change in 2020 when she was introduced to the Agriculture and Market Support(AMS) project by field training officers.

The project offered practical training in farming, postharvest handling, soap making, mandazi production, and mushroom growing. Participants were encouraged to choose an area of interest, and Mbabazi chose poultry farming and mandazi production.

Group Participation and Economic Breakthrough

As a member of the Kakoni B Bakyala Twetungure Group, Mbabazi actively participated in the group's mandazi enterprise. The business, run by four women, generated daily sales of 80,000 Ugandan shillings, with a profit of 35,000 shillings.

After a year of saving, each member received 600,000 shillings in July 2023. Mbabazi used her share to purchase broiler chickens, launching a poultry business that has now successfully run through four production cycles.

Her poultry farm is thriving, with a mortality rate of just 0.04 percent, meaning she loses only one or two birds out of every 110. Her husband has been a strong supporter, helping her build the poultry house, buying veterinary medicine, and assisting in finding better markets. Their teamwork has become a model for others in the community, who often visit them to learn and draw inspiration.

Mbabazi's life has transformed significantly. She now pays school fees, buys veterinary supplies, settles utility bills, and provides healthcare for her family, all from her earnings. She proudly shares that she buys clothes for her husband and children, a gesture that symbolises her financial independence and appreciation for her family.



4.0 Transformational Stories



Triffin provides water to the chickens inside the poultry house

Before joining AMS, Mbabazi's economic activities were limited to subsistence farming. Today, she is a respected entrepreneur and a beacon of hope in her village. The AMS project also instilled values of inclusivity and respect.

Mbabazi recalls being trained on disability inclusion and the importance of embracing diversity. She was also encouraged to foster harmony at home, respect her husband, and work together to build a better future for their children.

Vision and Aspirations

Mbabazi dreams of expanding her poultry farm from 100 to thousands of birds. She plans to diversify her income sources to ensure sustainability and resilience. Together with her husband, she intends to plant pasture to support livestock production and maintain a stable feed supply. They have also opened a bank account, a practice encouraged by AMS trainers, to safeguard their savings and plan for the future.

Message to Women

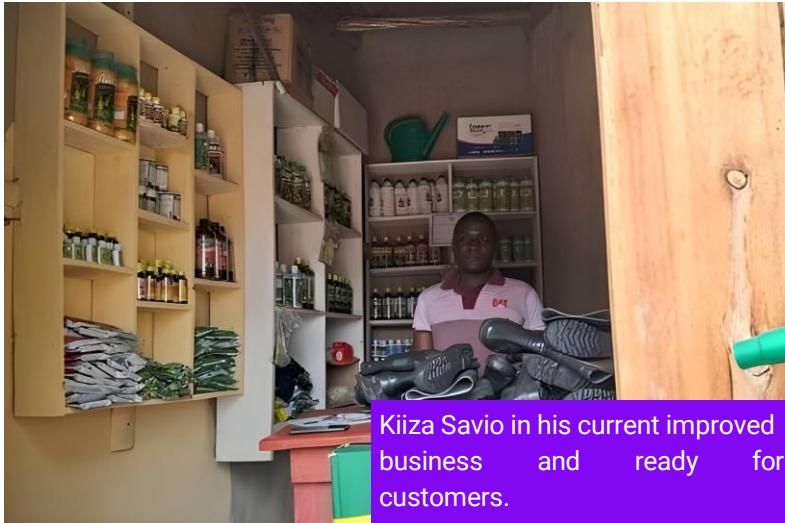
Mbabazi's message to fellow women is powerful and heartfelt:

"Work hard, be patient, and build trust with your spouse. Speak positively, support each other, and grow together. When women speak ill of their husbands, they sow seeds of resentment in their children. Let love and unity be the foundation of every home.



4.0 Transformational Stories

From Farm Institute to Agro-Vet Dealer: The Journey of Kiiza Savio



Kiiza Savio in his current improved business and ready for customers.

Profile

Name: Kiiza Savio

Age: 29 years

Enterprise Name: Savio's Agro Input Shop

Location: Biguli Sub-County, Kamwenge District

Background

Before joining the YIDaMS project, Kiiza Savio operated a small veterinary drug shop in Kanyomyo village. Though he earned a modest income from selling vet drugs, he had a vision to expand into agro inputs.

With limited capital, he started the agro-input business as a side hustle, operating on a small scale while continuing his veterinary work.

Discovering the Opportunity

Savio was introduced to the YIDaMS project during an assessment visit by project staff, who found him at his shop. They shared information about the project and its support for agro-input dealers. Interested in growing his business, Savio enrolled in the program.

Skills and Support Received

Through YIDaMS, Savio received training in agrochemical handling and safe use at IBO Farm. He also benefited from training in financial literacy, record keeping, business planning, savings and internal lending communities (SILC), group dynamics, entrepreneurship, leadership, and dairy management.

He was supported with a startup kit and linked to farmer networks through farm visits, which helped create a market for his products.



4.0 Transformational Stories

Starting His Business

Savio used UGX 570,000 from his savings group and topped it up with income from his vet drug shop to pay rent and improve his shop premises. With the startup kit valued at UGX 2,800,000, his total business capital rose to UGX 3,900,000. He expanded his product range to include gumboots, watering cans, hoe handles, knapsack sprayers, and other farm tools.

Impact and Growth

The support from YIDaMS led to significant growth in Savio's business. His monthly earnings increased from UGX 150,000–250,000 to between UGX 250,000 and 794,000. He is now passionate about his work and committed to serving the farming community. He is also planning to acquire a loan from IBO SACCO to further improve and expand his business.

Family Support

Savio's parents supported his education, which laid the foundation for his current business. While they are not directly involved in the enterprise, their early support was instrumental in his development.

Gender and Inclusion

Savio received training in gender and safeguarding. He values working with women and persons with disabilities, recognizing their ability to contribute meaningfully to the agricultural sector.

He shared,

"I've learned that women and people with disabilities can do any kind of work. They deserve equal access to resources and opportunities in the community."

Challenges

Savio faces several challenges, including delays in procuring stock from Mbarara and seasonal fluctuations in sales due to climate change. During dry seasons, demand for some inputs drops, affecting his income.

Support Needed

To improve service delivery and reach more farmers, Savio needs a motorcycle for transport and additional equipment such as a cutting table, soap mixer, and storage containers.

Vision and Goals

Savio aims to double his monthly sales from UGX 794,000 to UGX 1,580,000 and increase his revenue to UGX 2,000,000. He plans to expand his product line to include more agro- inputs such as rakes, spades, overalls, and additional chemicals.

Call to Action

Savio encourages young people to take initiative and explore opportunities in agriculture.

"I recommend that youth wake up and start dairy-related activities. Start small, stay committed, and grow your business step by step."



5.0 Financials and Fund Management



INDEPENDENT AUDITOR'S REPORT TO THE EXECUTIVE MEMBERS OF RIPPLE EFFECT UGANDA LIMITED FOR THE PERIOD ENDED 30TH JUNE 2025 (CONT...)

Report on other requirements:

As required by the Non-Governmental Organisation Act, Cap 109 , Laws of Uganda and the Companies Act, Cap 106, Laws of Uganda., we report to you, based on our audit, that:

- We have obtained all the information explanations which to the best of our knowledge and belief were necessary the for the purpose of our audit.
- In our opinion proper books of account have been kept by the Organization, so far as appears from our examination of those and
- The Organization's statement of financial position and statement of Income and expenditure are in agreement with the books of account.

The engagement partner on the audit resulting in this independent auditor's report is CPA Samuel Okurapa - P0-237

CPA Samuel Okurapa
Engagement Partner



Certified Public Accountants
Buganda Road Offices, Block B5,
Plot 7,9 & 11 Buganda Road,
P.O Box 10639
Kampala - Uganda
REF: JKO/02/1125/1178





5.0 Financials and Fund Management

Ripple Effect Uganda Limited
Audited Report and Financial Statement for the year ended 30th June 2025

6.0 STATEMENT OF FINANCIAL POSITION

	Notes	For the year ended 30 Jun-25	For the year ended 30 Jun-24
Assets			
Non- Current Assets			
Property, plant and equipment	11.1	1,062,869,054	1,771,977,000
Right of use asset	11.2	1,198,350,000	1,200,000,000
		2,261,219,054	2,971,977,000
Current Assets			
Cash and cash equivalents	11.4	4,664,459,963	16,015,966,000
Accounts receivables	11.3	1,161,034,388	1,071,606,000
		5,825,494,351	17,087,572,000
Total Assets		8,086,713,404	20,059,549,000
Fund and liabilities			
Equity			
Capital Fund		2,478,548,808	2,477,325,000
Revaluation reserve		338,474,480	493,426,000
Accumulated Fund		1,311,097,054	478,513,000
		4,128,120,341	3,449,264,000
Current Liabilities			
Accounts payables	11.5	3,958,593,063	16,608,982,000
		3,958,593,063	16,608,982,000
Total Fund and Liabilities		8,086,713,404	20,058,246,000

The financial statements and notes on pages 15 to 30 were approved by the leadership Committee on the 9 December and were signed on its behalf by:

The accounting policies on pages 19 to 22 and the notes on pages 23 to 30 form an integral part of the financial statements.



Board Chair



Country Director



5.0 Financials and Fund Management

Ripple Effect Uganda Limited

Audited Report and Financial Statement for the year ended 30th June 2025

7.0 STATEMENT OF INCOME AND EXPENDITURES

	Notes	For the year ended 30 Jun-25	For the year ended 30 Jun-24
Income	11.6	26,628,556,908	11,876,756,000
Other Income	11.7	527,839,630	514,721,000
		<u>27,156,396,538</u>	<u>12,391,477,000</u>
Expenditures			
Project Costs	11.8	25,996,750,023	11,138,155,000
Support Costs	11.9	1,142,631,539	1,253,322,000
		<u>27,139,381,563</u>	<u>12,391,477,000</u>
Surplus or (deficit) for the year		<u>17,014,975</u>	<u>-</u>



5.0 Financials and Fund Management

Ripple Effect Uganda Limited

Audited Report and Financial Statement for the year ended 30th June 2025

9.0 STATEMENT OF CASH FLOWS

	Notes	For the year ended 30-Jun-2025 UGX	For the year ended 30-Jun-2024 UGX
Cash flows from operating activities			
Surplus for the year		17,014,975	-
Adjustment for:			
Loss on disposal of assets		16,636,347	-
Depreciation		568,046,207	-
Adjustment		1,173,865,357	176,562,000
Changes in assets and liabilities			
Increase in payables	11.5	(12,650,388,937)	(108,350,000)
Increase in receivables	11.3	(89,428,388)	8,726,387,000
Net cash generated from/ (used in) operating activities		(10,964,254,439)	8,794,599,000
Cash flows from investing activities			
Purchase of property, plant and equipment	11.1	(511,673,799)	(176,562,000)
Proceeds from sale of assets		124,423,200	-
Purchases of other financial assets		-	(76,000)
Net cash generated from/ (used in) operating activities		(387,250,599)	(176,638,000)
Total cash movement for the year		(11,351,505,038)	8,617,961,000
Cash and cash equivalents at start of the year		16,015,965,000	7,398,004,000
Cash and cash equivalents at the year end	11.4	4,664,459,962	16,015,965,000



6.0 Conclusion

Scaling Impact, Deepening Transformation

The 2024–2025 reporting year reaffirms Ripple Effect Uganda’s position as a **catalyst for inclusive, sustainable development**. Through the implementation of its flagship initiatives **YIDaMS, AMS, SAPLING, and the Soybean Value Chain Project**, the organisation reached **over 727,826 individuals**, advancing its mission to **inspire and equip African communities to transform their lives and protect the planet**.

This impact is not merely measured in numbers, but in the systemic shifts witnessed across communities: **youth transitioning into dignified employment, women leading enterprises, refugees building self-reliant livelihoods, and persons with disabilities participating meaningfully in economic and social life**. The mobilisation of **UGX 3.1 billion** in savings, facilitation of **UGX 5.3 billion** in milk sales, and support to over **21,000 youth-led enterprises** are tangible indicators of a development model that is locally owned, market-driven, and resilience-focused.

Ripple Effect Uganda’s approach is deliberately aligned with **Uganda’s Vision 2040**, the **National Development Plan IV**, and the **Sustainable Development Goals (SDGs)**. By integrating sustainable agriculture, enterprise development, and gender and social inclusion, Ripple Effect Uganda is addressing the root causes of poverty, food insecurity, and inequality while building the capacity of communities to lead their own transformation.

Looking ahead, Ripple Effect Uganda remains committed to **scaling proven models, deepening strategic partnerships, and amplifying community voice and agency**. Development is not a transaction, it is a journey of dignity, equity, and shared prosperity.

Join the Ripple Effect

We invite you to be part of our journey to transform lives and empower communities.

- **Donate:** Your contribution can create lasting change.
- **Partner:** We welcome partnerships with individuals, organizations, and companies.
- **Volunteer:** Join us in the field or offer your expertise to support our programs.



Ripple Effect staff at a staff retreat

CONTACT US

Plot 1, Ssemawata Road, Ntinda

P.O. Box 23627, Kampala, Uganda

Tel: +256 702 700 627

Email: uganda@rippleeffect.org

Website: rippleeffect.org/uganda

